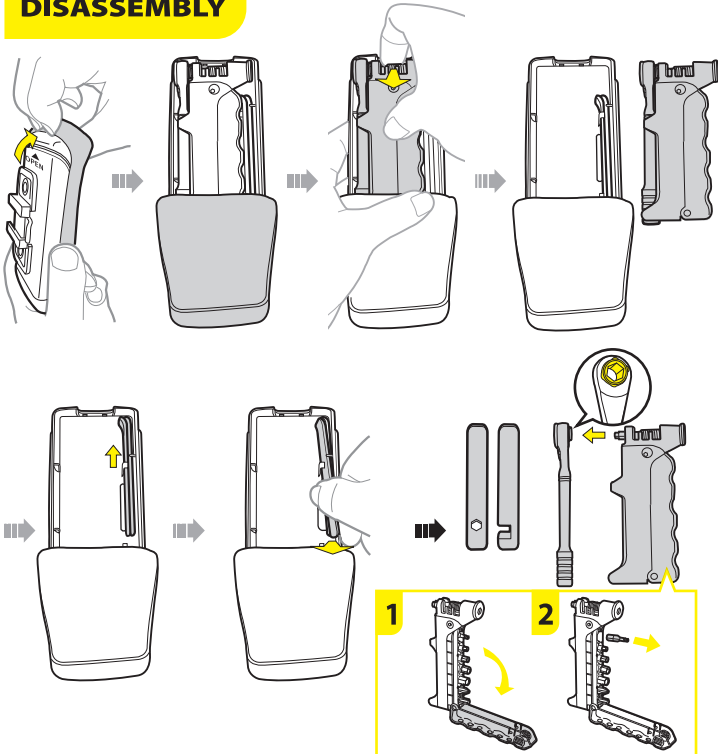
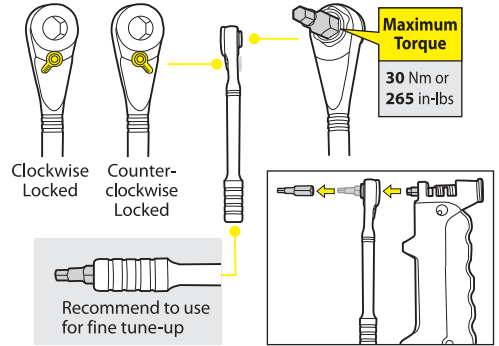


DISASSEMBLY

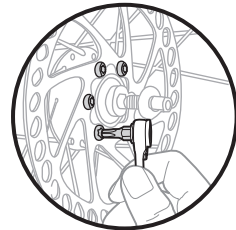


Using Ratchet Tool

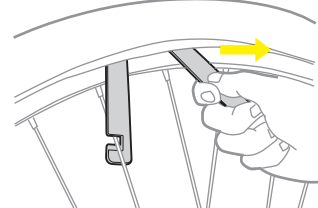


Using T25 Torx Bit

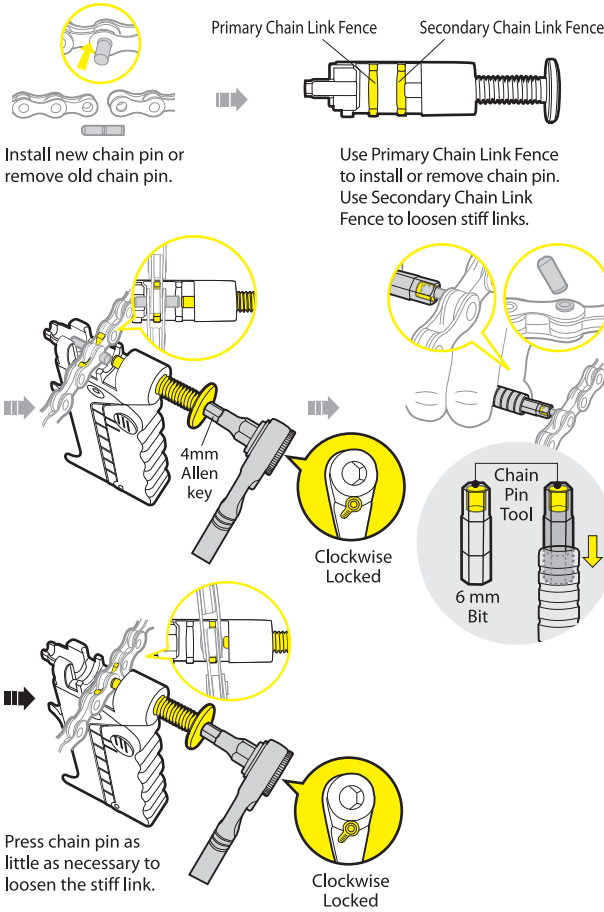
Tighten disc brake rotor bolts with T25 Torx bit.



Using Tire Levers

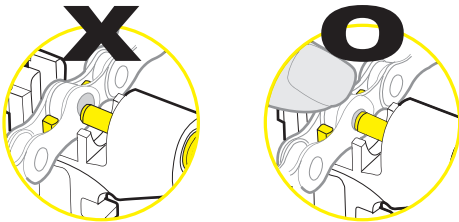


Using Chain Tool



WARNING

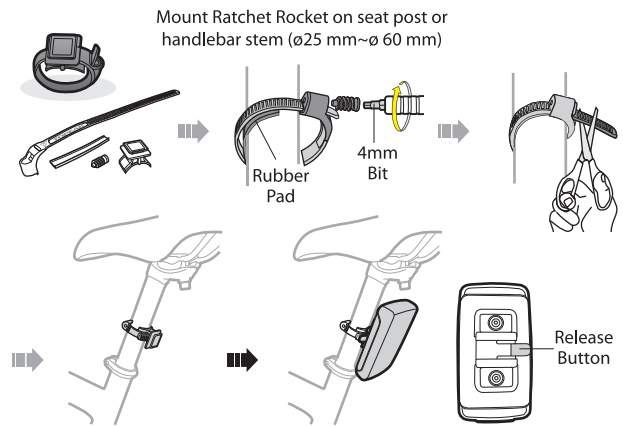
When pressing in the chain pin, push down on the top of the chain to keep it fully engaged in the chain tool cradle. Make sure the press pin of the chain tool is centered against the chain pin.



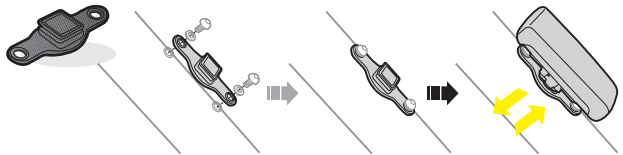
NOTE

1. Lubricate and maintain tool with teflon based lubricant when needed. To prevent rusting, keep tool dry.
2. The metal tire lever is designed for durability and for emergency use only. We recommend to use Topeak plastic tire levers, Shuttle Lever 1.1 or 1.2 for regular use and to prevent damage to carbon and alloy rim surfaces.

Using Band Clamp Mount (F55-L)



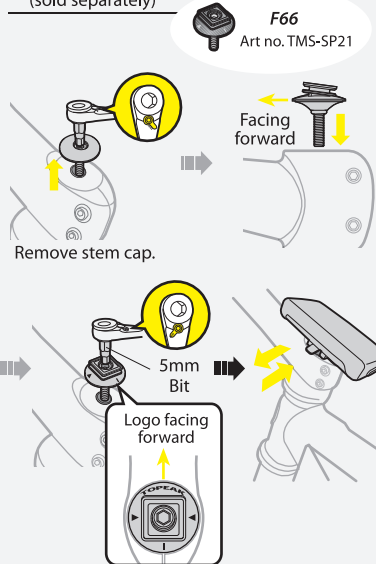
Using Water Bottle Boss Mount



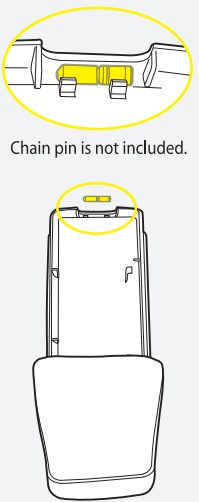
ADDED FEATURES

A. Stem Cap Mount (F66)

(sold separately)



B. Chain Pin Compartment



WARRANTY

2-year Warranty: All mechanical components against manufacturer defects only.

Warranty Claim Requirements

To obtain warranty service, you must have your original sales receipt. Items returned without a sales receipt will assume that the warranty begins on the date of manufacture. All warranties will be void if Ratchet Rocket is damaged due to user abuse, tool or body alterations, modification, or used in any way not intended as described in this user's guide.

* The specifications and design are subject to change without notice.

Please contact your Topeak dealer with any questions.

For USA customer service call: 1-800-250-3068

Website: www.topeak.com